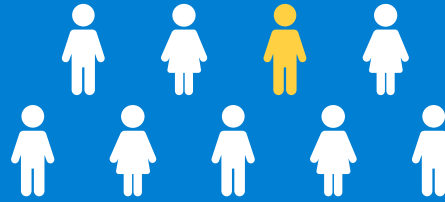


**Childhood bereavement is a critical issue** and an increasingly important national priority. The Childhood Bereavement Estimation Model (CBEM)<sup>1</sup> approximates rates of U.S. children and youth who will experience the death of a parent or sibling by the time they reach adulthood. Results from the CBEM are updated annually using national, state, and regional vital statistics.<sup>2</sup> This report uses data from 2018 to 2022, the five most recent years of data from the Centers for Disease Control and Prevention.\*

# 1 in 9

children in Tennessee **will experience** the death of a **parent or sibling** by age 18



# 5<sup>TH</sup>

CBEM RANKING BY STATE†

# 11.6% ~ 176K

children **will be** bereaved by age 18 **HIGHER** than national rate of **8.6%**



& MORE THAN **DOUBLES**

# 419K

youth **will be** bereaved by age 25

## Projected CBEM Results

Projected CBEM results presented above combine estimates of a) the number of children who are already bereaved and b) the number of children who will experience the death of a parent or sibling by ages 18 and 25.

Projected results help individuals and organizations center childhood bereavement as a public priority by:

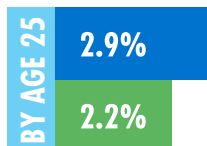
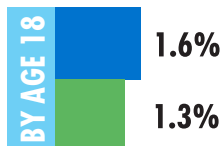
- Forecasting service and systems demands
- Engaging in advocacy and policy efforts
- Building workforce capacity
- Cultivating public awareness and engagement
- Evaluating best practices
- Securing financial support

## Death of a Sibling & Death of a Parent

The CBEM provides separate, independent estimates for youth who will experience the death of a parent or the death of a sibling.



### Sibling



### Parent



### Sources

- Burns et al. (2023). *Frontiers in Pediatrics*, 11.
- Centers for Disease Control and Prevention, National Center for Health Statistics, [CDC WONDER](#).

\*Please see the [CBEM Technical Appendix](#) for additional information. All numbers and percentages are rounded.

† States and D.C. ranked from (1) highest CBEM rate to (51) lowest CBEM rate.



Judi's House/JAG Institute is a research-based nonprofit in Aurora, Colo. devoted solely to supporting grieving children and their families.



NEW YORK LIFE FOUNDATION

Judi's House/JAG Institute partnered with the New York Life Foundation to create the Childhood Bereavement Estimation Model (CBEM).